

ANNUAL REPORT

INTERNATIONAL RESCUE COMMITTEE

2024

All rights reserved by

International Rescue Committee Bangladesh

Published: February, 2025

Report timeline: October 2023 to September 2024

Developed by

Advocacy & Communication Department

International Rescue Committee Bangladesh

Photographs by

International Rescue Committee Bangladesh

Published by

International Rescue Committee Bangladesh

4th Floor, House No. CEN (D) -3, Apt No. A 4-5

Road No. 95, Gulshan-2, Dhaka-1212, Bangladesh

Tel:+88028881453

Email: IRC.BD@rescue.prg

Facebook: <https://www.facebook.com/rescue.org.bd/>

Web: Rescue.org



Table of Content

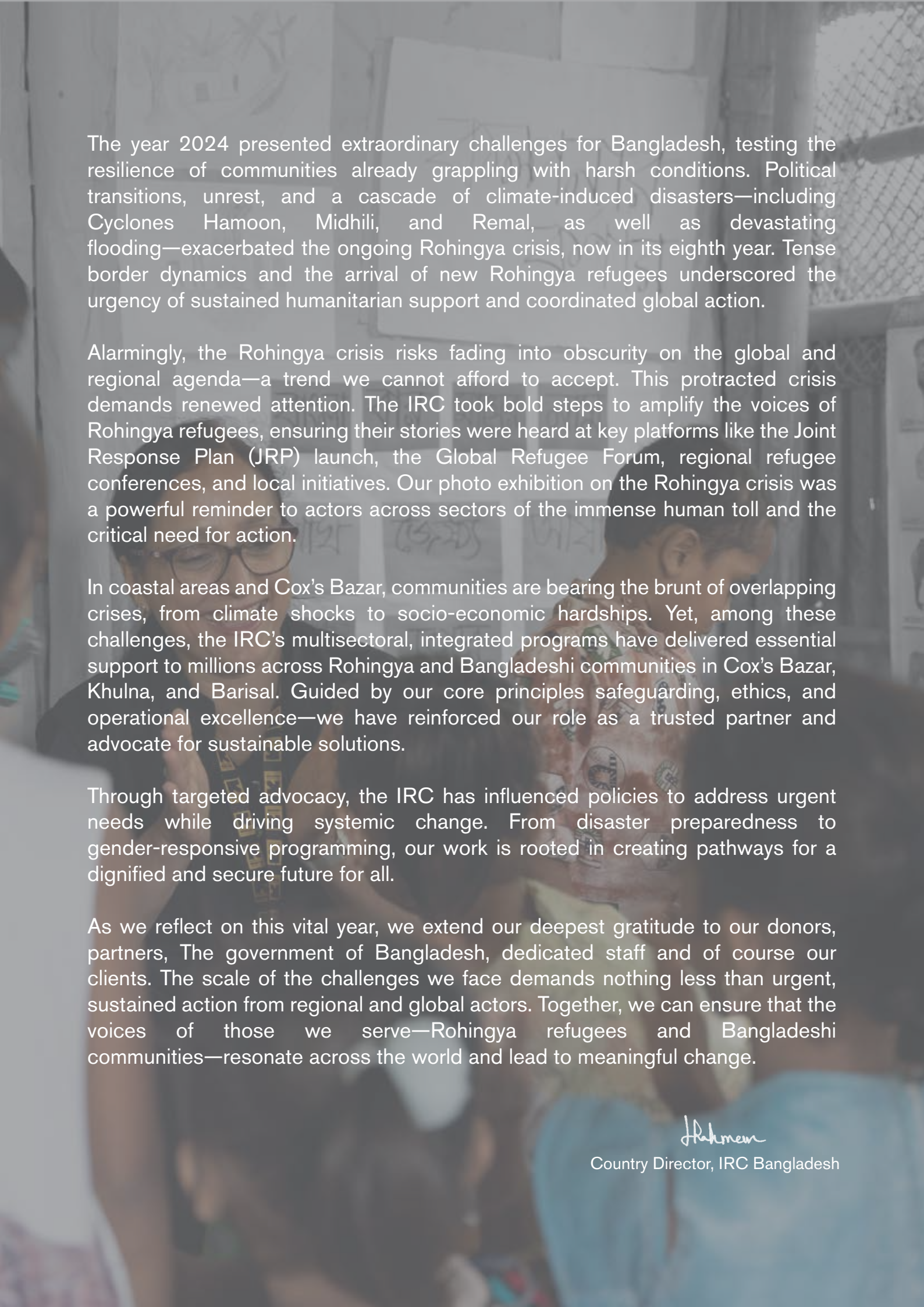
03	MESSAGE FROM THE COUNTRY DIRECTOR
05	AT A GLANCE
07	WHO WE ARE
08	OUR FOOTPRINT
11	HEALTH PROGRAM
13	PROTECTION RULE OF LAW
15	WOMEN'S PROTECTION A EMPOWERMENT
17	CHILD PROTECTION
19	EDUCATION
21	EMERGENCY PREPAREDNESS AND RESPONSE
23	ECONOMIC RECOVERY AND DEVELOPMENT
25	SUBASH CONSORTIUM AND RSC
26	PARTNERSHIP
27	ADVOCACY AND COMMUNICATION
29	STRENGTHENING SAFE PRACTICES AND ETHICS AND COMPLIANCE
30	OPERATIONAL EXCELLENCE
31	GRANTS
32	FINANCE

Message from The Country Director



In 2024, IRC and 21 partners, including Eight women-led organizations, tackled crises and drove lasting change, reaching nearly 400,000 people.

- **Hasina Rahman**
Country Director
International Rescue Committee - Bangladesh



The year 2024 presented extraordinary challenges for Bangladesh, testing the resilience of communities already grappling with harsh conditions. Political transitions, unrest, and a cascade of climate-induced disasters—including Cyclones Hamoon, Midhili, and Remal, as well as devastating flooding—exacerbated the ongoing Rohingya crisis, now in its eighth year. Tense border dynamics and the arrival of new Rohingya refugees underscored the urgency of sustained humanitarian support and coordinated global action.

Alarming, the Rohingya crisis risks fading into obscurity on the global and regional agenda—a trend we cannot afford to accept. This protracted crisis demands renewed attention. The IRC took bold steps to amplify the voices of Rohingya refugees, ensuring their stories were heard at key platforms like the Joint Response Plan (JRP) launch, the Global Refugee Forum, regional refugee conferences, and local initiatives. Our photo exhibition on the Rohingya crisis was a powerful reminder to actors across sectors of the immense human toll and the critical need for action.

In coastal areas and Cox's Bazar, communities are bearing the brunt of overlapping crises, from climate shocks to socio-economic hardships. Yet, among these challenges, the IRC's multisectoral, integrated programs have delivered essential support to millions across Rohingya and Bangladeshi communities in Cox's Bazar, Khulna, and Barisal. Guided by our core principles safeguarding, ethics, and operational excellence—we have reinforced our role as a trusted partner and advocate for sustainable solutions.

Through targeted advocacy, the IRC has influenced policies to address urgent needs while driving systemic change. From disaster preparedness to gender-responsive programming, our work is rooted in creating pathways for a dignified and secure future for all.

As we reflect on this vital year, we extend our deepest gratitude to our donors, partners, The government of Bangladesh, dedicated staff and of course our clients. The scale of the challenges we face demands nothing less than urgent, sustained action from regional and global actors. Together, we can ensure that the voices of those we serve—Rohingya refugees and Bangladeshi communities—resonate across the world and lead to meaningful change.

Jahmeh

Country Director, IRC Bangladesh

AT A GLANCE



1,45,201 clients were received critical **health** care services that improved their well-being and enhanced their resilience in the face of ongoing challenges.

HEALTH

Unique Clients		145201
Female	108886	
Male	36315	
Person with Disability	509	
Rohingya	118918	
Host Community Members	26283	

119573 Unique Clients

74143 Female

45430 Male

1353 Person with Disability

59955 Rohingya

59618 Host Community Members



WOMEN'S PROTECTION AND EMPOWERMENT

In 2024, IRC's Women's Protection and Employment program empowered 1,19,573 unique clients with the skills and resources to break cycles of vulnerability and build stronger futures



Child Protection program supported 10,340 unique clients, safeguarding children and empowering families to build a safer, brighter future.

CHILD PROTECTION

Unique Clients		10340
Female	5111	
Male	5229	
Person with Disability	28	
Rohingya	8837	
Host Community Members	1503	



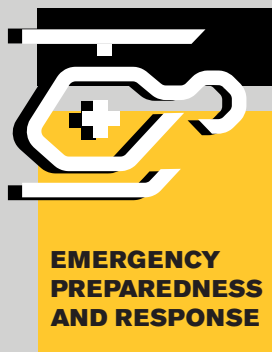
IRC BANGLADESH

IRC's Protection and Rule of Law program supported 14,839 unique clients, ensuring their rights were upheld and promoting safer, more secure communities.



Unique Clients		14839
Female	9461	
Male	5376	
Person with Disability	656	
Rohingya	4437	
Host Community Members	10402	

22432 Unique Clients	
13591	Female
8841	Male
1563	Person with Disability
244	Rohingya
22188	Host Community Members



IRC's Emergency Preparedness and Response program assisted 22,432 unique clients, enhancing their resilience and providing critical support in times of crisis.

IRC's Economic Recovery and Development program supported 17,811 unique clients, empowering them with the tools to rebuild their livelihoods and achieve long-term stability.



Unique Clients		17811
Female	10893	
Male	6918	
Person with Disability	1561	
Rohingya	N/A	
Host Community Members	17811	

28985 Unique Clients	
15876	Female
13109	Male
223	Person with Disability
20274	Rohingya
8711	Host Community Members



Education program supported 28,985 unique clients, focusing on early childhood development to promote lifelong learning, emotional well-being, and stronger family bonds.



Who We Are

Founded in 1933 by Albert Einstein and humanitarians, IRC works in over 40 crisis-affected countries, providing healthcare, education, and empowering communities, with a focus on women and girls.

Since 2017, IRC has supported Rohingya Refugees and Bangladeshi nationalities communities in Cox's Bazar,

Khulna, Barisal, and Chittagong with integrated services.

The organization also addresses climate change impacts by building resilience and promoting economic recovery, education, and protection.



OUR FOOTPRINT



5

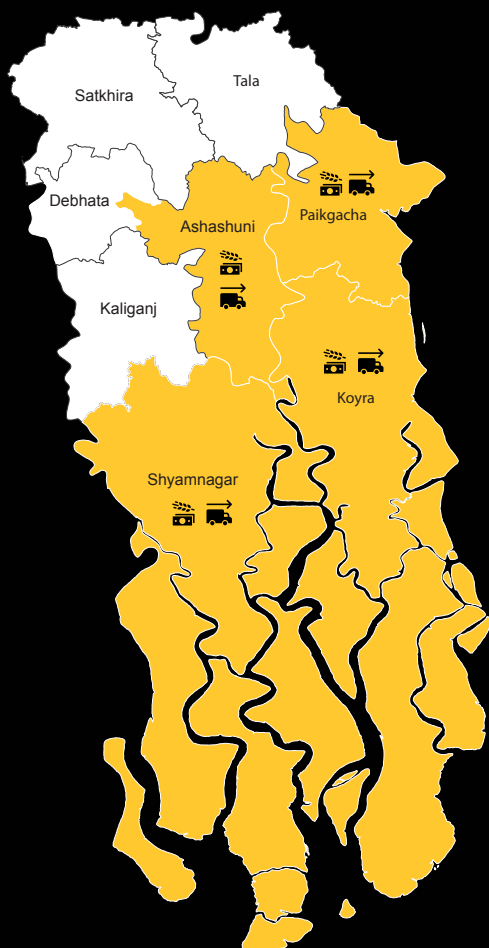
■ IRC's Presence

■ No Presence

Footprint in the ROHINGYA CAMPS



Footprint in the **BANGLADESHI COMMUNITIES**



-  Health
-  Child Protection
-  Protection & Rule of Law
-  Emergency Preparedness & Response
-  Education
-  Women's Protection & Empowerment
-  Economic Recovery & Development

IRC's Presence
 No Presence



CARE that

TRANSFORMS

In 2024, the International Rescue Committee (IRC) continued its vital mission to provide accessible and quality healthcare to both Rohingya refugees and host communities in Cox's Bazar and southern Bangladesh. Despite significant challenges, IRC remained focused on delivering comprehensive health services, fostering community engagement, and ensuring equitable access to care.

IRC's Health Approaches

IRC provides culturally sensitive care in areas like sexual and reproductive health, maternal care, mental health, and Non-communicable diseases (NCDs). Women-friendly spaces (WFS) and community health workers ensure accessible, sustainable healthcare for both refugees and host communities.

Midwives play a vital role in maternal and newborn health, ensuring safe deliveries and postnatal care, especially in rural areas with limited healthcare access, improving outcomes for mothers and children.

“

During cyclone MOCHA, I was worried when my labor pain started. Then in the IRC hospital, I had a safe delivery. Thanks to the Midwife apa.”

- A Rohingya Mother





I was worried my daughter will never be able to live like a regular girl. Thanks to IRC and Handicap International, she regularly received physiotherapy. Now she is much better. “

- A Rohingya mother of a Person with disability



2024 Health Progress Highlights

Expanded Access to Healthcare: IRC conducted 159,917 consultations at PHCCs, significantly increasing healthcare access for both Rohingya refugees and host communities. The opening of two new centers by mid-2024 further strengthened this reach.

Resilient Healthcare Infrastructure: The reopening of a climate-resilient health facility in May 2024 restored critical healthcare services after a devastating fire and ensured long-term, disaster-proof care for the community, setting a benchmark for future health interventions. Through seven PHCCs, 2,217 Normal Vaginal Deliveries (NVD) were conducted, significantly contributing to reducing maternal and child mortality rates. The center sets a benchmark for future health interventions in the Rohingya response.

Mental Health Support: IRC delivered 6,113 Mental Health and Psychosocial Support (MHPSS) consultations, addressing the mental health needs of vulnerable populations and helping individuals cope with trauma and stress.

Strengthened Community Health Engagement: IRC partnered with national organization and deployed 69 volunteers to enhance community health initiatives, increasing outreach and empowering local volunteers to promote health, prevent diseases, and improve health literacy in the camps and surrounding areas.

Coverage in Cox's Bazar and Southern Bangladesh

IRC operates 48 women-friendly spaces (WFS) and 7 primary healthcare centers (PHCCs) in Ukhiya and Teknaf, providing 24/7 essential services including general consultations, maternal and child health, NCD management, Sexual Reproductive Health (SRH) services, and mental health support.

In 2024, IRC's Young Mothers Support Group (YMSG) supported 220 adolescents mothers, ensuring they completed antenatal and postnatal care, including postpartum family



I didn't know much about my child's nutrition; IRC's outreach officer supports me by regular visit to my home and he gives me tips on how to take care of my child. My daughter is healthier now.”

- A Rohingya Mother



Challenges Encountered in Health

Low health-seeking behavior, influenced by social norms, religious beliefs, and instability in the camps, has resulted in a reluctance to seek hospital-based deliveries, often delaying care until complications arise. Additionally, limited referral options and funding constraints have disrupted the referral system for secondary and tertiary care, leaving vulnerable Rohingya communities with inadequate support for complex medical cases.



PROTECTION RULE OF LAW



Catalyzing Lasting Change

Through its Protection and Rule of Law (PRoL) program, the IRC promotes a safer, equitable environment in Cox's Bazar for Rohingya refugees and host communities. The program addresses violence, coercion, and deprivation to promote human rights and community resilience.

IRC's PRoL Unique Approaches

The IRC employs rights-based, community-centered approaches to mitigate protection risks. Protection monitoring informs advocacy and interventions, while Community-Based Protection Committees and the Protection Emergency and Response Unit empower local actors. InfoSheba provides real-time information, and legal assistance to support alternative dispute resolution. Collaboration with authorities strengthens systems and promotes sustainability.

“

As a member of the gender-diverse population, I was unaware of my rights and often faced negative behavior from the community. However, after joining the IRC-supported Community -Based Protection group, I have become an advocate for my community. I now actively raise awareness about humane treatment and advocate for the rights of all diverse populations. “

- A Rohingya individual





The paralegal engagement in women-led mediation provided me with the opportunity to resolve my disputes through proper legal guidance and professional mediation, ensuring access to fair and effective resolutions."

– A female client from host community

2024 PROL Progress Highlights

Community Resilience and Empowerment:

The establishment of six Community-Based Protection Committees (CBPCs) with 124 diverse members empowered communities to identify and mitigate protection risks. Enhanced training for law enforcement and local stakeholders improved understanding of human rights, GBV, and child protection, strengthening referral pathways and resilience. Protection case management and individual protection assistance reduced risks and enhanced the capacity of vulnerable populations, particularly new arrivals, to address rights violations.

Improved Justice and Information Access:

Strengthened legal mechanisms, including village courts and legal aid committees, improved access to justice for vulnerable populations. The InfoSheba platform and digital outreach via Facebook and WhatsApp delivered real-time information on critical issues to over 1.3 million clients, promoting awareness and preparedness across communities.

Protection Monitoring for Systemic Change:

IRC's systematic protection monitoring, combined with data collection and analysis of protection risks, informed impactful advocacy efforts to address protection issues of Rohingya and host communities. These initiatives drove policy improvements at local and national levels, tackled rights violations, promoted sustainable change, and amplified the voices and needs of vulnerable populations.

Coverage in Cox's Bazar, Bangladesh

The IRC's Protection and Rule of Law interventions support both camps and host communities, delivering coordinated and comprehensive services through strategic partnerships.



Thanks to Info Sheba, now I have got my DATA card. I have been struggling to get rations for my family, it's been a challenging time. IRC's Info Sheba team helped me with the process."

– A Rohingya mother



Challenges Encountered in PROL

Hidden protection risks, including stigma, retaliation fears, and restrictions, limit GBV reporting and leave cases unaddressed. Security concerns in areas with armed groups further restrict service access. Climate challenges like monsoons and landslides heighten vulnerabilities, while new Rohingya arrivals strain limited resources. Social tensions driven by anti-rohingya rhetoric, unequal services, population movements, and border conflicts worsen fragmentation and violence.



Empathy, Action, Change

The International Rescue Committee (IRC) addresses gender-based violence (GBV) by promoting **resilience** and empowerment through innovative programs, technical expertise, and close coordination with partners.

IRC's Women's Protection and Empowerment (WPE) Unique Approaches:

IRC's "**Women Rise**" initiative combines psychosocial support with GBV survivor-centered frameworks, utilizing the Women Rise Toolkit for group sessions, peer support, and empowerment. The approach is further strengthened by partnerships with local and national organizations, ensuring **enhanced service delivery** and community engagement. A key aspect of the initiative is the active engagement of men to challenge harmful gender norms and **promote positive behaviors**. Remote case management ensures continuous support, particularly during crises such as political unrest or floods, providing essential services to vulnerable women and girls.

Coverage in Cox's Bazar, Bangladesh

IRC's interventions reached women and girls in Rohingya Refugee camps and host communities, offering essential services despite restrictions. By integrating GBV services and participating in coordination platforms like the GBV Subsector, IRC expanded its reach while maintaining high-quality, survivor-centered care.



My goal is to make sure my daughters receive a good education so they can stand on their own feet."

– A Father
(Host Community Member)



Challenges Encountered in WPE

In 2024, IRC's WPE programs addressing violence against women and girls faced challenges, including persistent delays in justice, which hindered accountability for survivors. Cultural norms perpetuated violence, necessitating greater prevention efforts. Additionally, limited funding restricted the scaling of interventions and the provision of comprehensive services to vulnerable communities.

Key WPE Progress in 2024

Case Management and Evidence-Based Interventions:

IRC provides safe, confidential services in crisis settings, using evidence-based interventions to positively impact mental health in the face of security and climate challenges. Safety audits are also conducted to assess and enhance the protection of GBV survivors, ensuring that their needs are met with the highest safety standards. This integrated approach supports both the immediate and long-term well-being of vulnerable individuals.

Coordination and Partnerships:

IRC strengthens its ability to respond to emerging trends through global and regional coordination, and promotes effective partnerships with GBV and non-GBV partners for timely, integrated services.

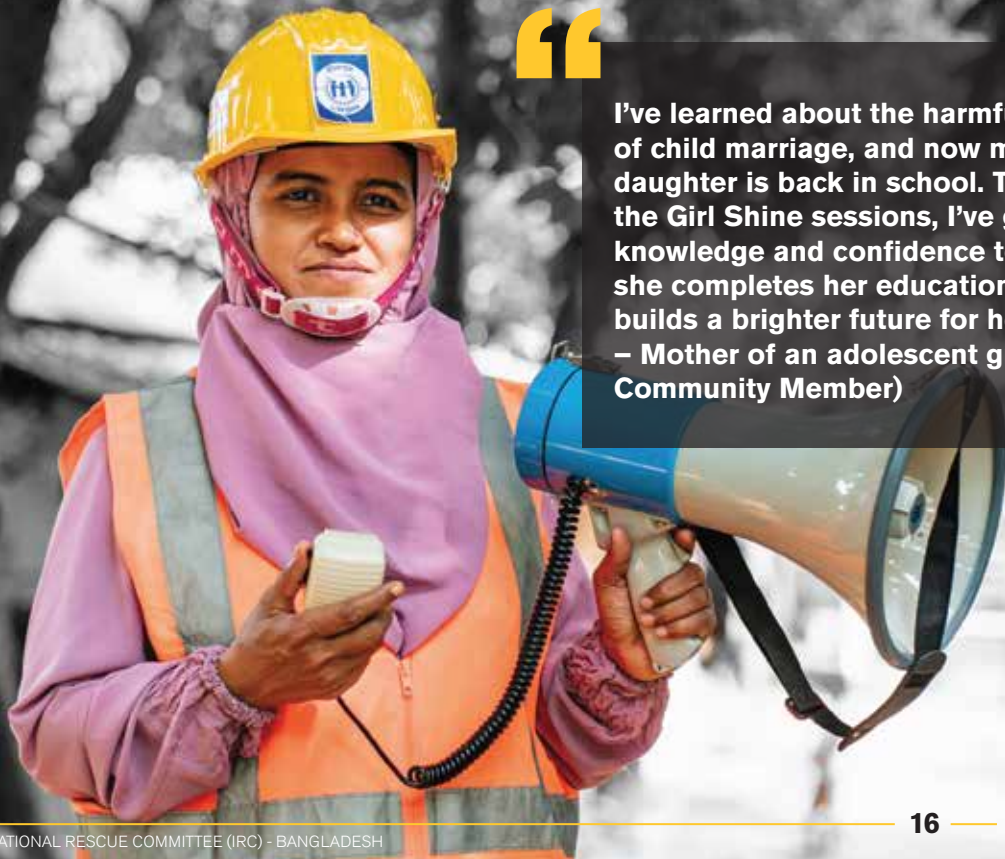
Leadership and Technical Support:

IRC provides strategic guidance and capacity building within the sector, leading efforts as a SAG member and chair of the Case Management Working Group to ensure quality service delivery.



I've learned about the harmful impacts of child marriage, and now my daughter is back in school. Through the Girl Shine sessions, I've gained the knowledge and confidence to ensure she completes her education and builds a brighter future for herself."

– Mother of an adolescent girl (Host Community Member)



A Future, Free from Harm

The International Rescue Committee (IRC) is dedicated to protecting children in Cox's Bazar by addressing the complex challenges they face in Rohingya refugee camps and host communities. Our goal is to protect children from harm, exploitation, and abuse.



I want to build a network for girls to combat child marriage and violence against girls and women."

- A Rohingya adolescent girl



IRC's CP Unique Approach

IRC's child protection approach combines prevention, response, and system strengthening. We offer psychosocial interventions to promote emotional well-being and address immediate protection risks through case management services. IRC collaborates with local authorities and community leaders to build resilient, community-led child protection systems.



In Myanmar, I used to play with clay, but in the camp, I lost interest. The SAFE session helped me cope and reignited my dreams of becoming an artist."

- A Rohingya adolescent boy



Coverage in Cox's Bazar, Bangladesh

IRC's child protection programs focus on areas with critical needs, supporting both Rohingya communities and host populations. The programs are closely integrated with other initiatives, including those related to Women's Protection and Empowerment (WPE), Protection and Rule of Law (PRoL), Education, Economic Recovery and Development (ERD), and Emergency Preparedness and Response (EPR). These efforts are strengthened through collaboration with local and national organizations, ensuring a comprehensive approach to addressing the needs of vulnerable children and families.



"In Myanmar, I used to play with clay, but in the camp, I lost interest. The SAFE session helped me cope and reignited my dreams of becoming an artist." - A Rohingya adolescent boy



Challenges Encountered in CP

Gender-specific protection risks, such as violence, abuse, and harmful practices like child marriage, disproportionately affect girls, underscoring the need for gender-sensitive approaches. Additionally, children with disabilities face significant barriers in accessing protection services, highlighting the importance of inclusive solutions. To address these challenges, it is essential to focus on strengthening local child protection systems through sustainable funding and long-term capacity-building efforts.

Key CP Progress in 2024

- ▶ **Child-Friendly Spaces and Case Management:** IRC has established child-friendly spaces and strengthened case management systems, providing psychosocial support to children aged 10-18. These efforts aim to mitigate risks such as abuse and child marriage, fostering resilience and emotional well-being among vulnerable children.
- ▶ **Strengthening Child Protection System:** Through collaboration with the Department of Social Services (DSS), IRC has strengthened the capacity of local partner organizations on global child protection case management standards, ensuring a consistent and effective approach across Cox's Bazar.
- ▶ **Community Engagement:** IRC has promoted community engagement by establishing Community-Based Child Protection Committees (CBCPCs) and piloting the "Family Makes a Difference" curriculum. This initiative focuses on promoting positive parenting practices for children aged 0-5, fostering a supportive and protective environment for young children.



Bridging Educational Gaps

In 2024, IRC advanced education initiatives in Cox's Bazar and southern Bangladesh, addressing the needs of Rohingya refugees, host communities, and climate-displaced populations. Despite challenges such as overcrowded classrooms, language barriers, cultural norms limiting girls' education, and climate impacts, IRC remained dedicated to ensuring quality learning opportunities.

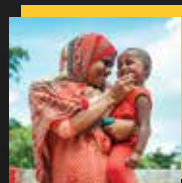
IRC's Education Approaches

IRC prioritized enhancing learning outcomes and expanding quality education access, especially for marginalized groups. Key efforts included early childhood development, Myanmar curriculum delivery, an Accelerated Learning package for adolescents, teacher training, and technology-driven professional development. To bridge evidence gaps, IRC conducted research to inform tailored solutions for teachers and students while integrating Social-Emotional Learning (SEL) to support holistic development.



“Ensuring my child's mental health is important, I learned it from IRC. Now I can see my child being happy, it makes me happy.”

- A Rohingya mother of a toddler girl.



Geographic Reach

In 2024, IRC's education program spanned multiple areas in Cox's Bazar and southern Bangladesh, serving both Rohingya and Bangladeshi children across camps, sub - districts, and unions to ensure inclusive and equitable access to education.



"CBLF is very important for us. Here, we learn education, new experiences, good character, and respectful communication with elders. We also improve in Math, English, life skills, and science."

- A Rohingya Adolescent Girl



Challenges Encountered in Education

Education programs for Rohingya, host community, and climate-affected children in Cox's Bazar and southern Bangladesh face significant hurdles. Data-sharing restrictions limit research and evidence-based interventions, while overcrowded classrooms, language barriers, and a shortage of skilled teachers strain resources, further exacerbated by funding shortfalls. Additionally, the lack of comprehensive programs for older adolescents, particularly girls, highlights a critical gap, restricting opportunities and long-term support for this vulnerable group.

2024 Education Progress Highlights

- **AI-Driven Teacher Development & Training:** IRC launched Onneshi, an AI-powered chatbot to provide personalized teacher development resources, addressing infrastructure and funding challenges. This, combined with Social-Emotional Learning (SEL) and Disaster Risk Reduction (DRR) training for teachers, enhanced teaching practices and emotional support for students in overcrowded classrooms.
- **Research for Policy Change & Evidence-Based Advocacy:** Through the ERICC project, IRC identified critical educational gaps, completing three major research studies that provided insights for policy change, improving educational outcomes for both Rohingya and host community children.
- **Scaling Early Childhood Development (ECD) Programs:** IRC evaluated the Gindegi Goron ECD program for cost-effectiveness and scalability. The success led to the design of a new scalable model, positively impacting children in remote and blended settings.
- **Partnership-Driven Field Implementation & Last-Mile Learners Support:** IRC partnered with local organizations to support over 7,000 learners in camps and communities, ensuring over 1,000 adolescents in underserved areas like Moheshkhali, Cox's Bazar, and Rangabali had continued access to education.



Preparing for Climate Shocks

Unique Approaches:

The IRC uses a multi-sectoral approach to integrate emergency preparedness across health, education, protection, and economic recovery. By empowering community-based groups, developing disaster mitigation plans, and enhancing localized response strategies, the IRC ensures that frontline teams—such as Mobile Medical Teams (MMTs), Protection Emergency Response Units (PERU), and GBV and Child Protection teams—are prepared for effective disaster response.

The IRC's Emergency Preparedness and Response (EPR) aims to reduce the impact of disasters and climate crises by building community resilience, strengthening capacity, and ensuring timely, inclusive responses to save lives and support recovery.



“During disasters there were time when we had no food at home, the dry food, especially mineral water given by IRC has been a great help.”

- A Father (Host Community Member in Ramu)



“

“I didn’t know how to protect my child during natural disasters, IRC’s awareness sessions helped me with important knowledge.”

- A Mother (Host Community Member in Patuakhali)



Challenges Encountered in EPR

Climate change disproportionately affects vulnerable groups, with women facing increased risks due to limited mobility, resources, and decision-making power, worsened by gender-based violence (GBV). Youth experience disruptions to education and job opportunities, leading to higher unemployment and risky behaviors. Persons with disabilities (PWD) face exclusion from evacuation efforts and significant barriers during disasters. Inclusive disaster responses are essential to reduce vulnerability and build resilience.

“

“The cash support I received from IRC was an immense help during that hard time, I recovered from my loss.”

- A Woman (Host Community Member affected by Cyclone Remal)



Top Successes:

Response and Recovery:

Livelihood restoration efforts impacted 2,796 households, helping them rebuild, while 2,820 individuals gained disaster preparedness skills. Additionally, 3,615 households in Khulna, Patuakhali, and Barguna benefited from cash assistance and recovery support.

Monsoon Flood Relief and Early Action:

Survival packages provided to 10,000 households in Mirsarai and Ramu enhanced resilience. Cyclone shelters supported 300 households in Ukhiya, and early warnings enabled safe evacuations for vulnerable families in Ramu, Chakaria, and Ukhiya during Cyclones Hamoon and Midhili.

Research and Stakeholder Engagement:

The Multisectoral Need Assessment on Climate Change and Disaster Impact raised awareness and encouraged national stakeholders to collaborate on climate action, benefiting displaced populations and improving their resilience to climate challenges.



Recovery Through Resilience



“

“I used to feel hopeless about my future, then I joined IRCs learn to lead sessions, I learned many social skills along with business skills, it made me confident and attentive to my studies.”

*- A Male Youth
(Host Community Member)*

The IRC's Economic Recovery and Development (ERD) program aims to build resilience in crisis-affected populations through comprehensive support, focusing on enhancing livelihoods, climate-resilient practices, workforce development, and financial inclusion. The program includes cash and voucher assistance, vocational training, Climate Smart Agriculture, and market access, enabling communities to achieve long-term economic stability.

IRC's ERD Unique Approach:

IRC combines cash assistance, business skills, vocational training, and market access, focusing on sustainable solutions. The Green Skills Training equips youth and women with eco-friendly farming skills, while the Local Adaptation Plan for Action (LAPA) develops climate-resilient solutions for coastal communities. IRC's partnership with DreamStart Lab introduced digital Village Savings and Loan Associations (VSLA) to enhance financial inclusion for youth and women.



Challenges Encountered in ERD

Despite IRC's efforts, many youth and women face challenges in securing stable jobs due to a stagnant job market and competition. Climate-induced environmental degradation harms agricultural productivity and fuels tensions between communities. Limited access to financial services also hinders business growth, although IRC's digital VSLA initiative helps bridge this gap.



“As girls, it was hard for us to do something on our own. Thanks to IRC’s learn to earn sessions, me and my female friends learned sewing, now we are planning to open a tailor shop of our own.”

*- A Female Youth
from host community Cox's Bazar*



2024 ERD Progress Highlights

Enhanced Livelihood Security:

Cash assistance and food support reached 15,928 households, enabling them to meet essential needs, strengthen their resilience, and recover from crises.

Improved Economic Self-Reliance:

Through business skills and vocational training, 1,341 youth and women were empowered to improve their livelihoods, boosting economic self-reliance and creating opportunities for jobs and entrepreneurship.

Increased Climate Resilience:

Training in climate-smart agriculture empowered women and youth, while climate activists were equipped with sustainable business practices, strengthening community resilience to climate challenges.

Expansion of Financial Inclusion:

The launch of digital VSLAs increased access to loans, enabling youth to grow businesses and improve financial stability.



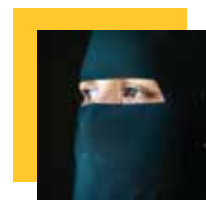
Together for Tomorrow

The Comprehensive, Integrated Multi-Sector Response for Rohingya Refugees and Host Communities – ShuBaSh Consortium was established in 2020 as a multi-sector initiative led by the IRC and supported by BPRM, in collaboration with Concern Worldwide and local organizations. It delivers essential services in health, nutrition, food security, protection, and social behavior change communication (SBCC) to Rohingya refugees and host communities in Cox's Bazar. Operating across 17 camps and three host community unions, the consortium promotes safety, dignity, and resilience, with a strong emphasis on gender and protection. In 2024, key achievements included 95% vaccination coverage, strengthened community awareness of protection risks, improved women's participation in decision-making, enhanced maternal and child nutrition, and successful home gardening initiatives. However, challenges remain, including logistical constraints in large refugee settlements, limited access to remote areas, and addressing long-term psychosocial needs. Despite these barriers, ShuBaSh continues to adapt, ensuring sustainable support for vulnerable communities.



Home gardening empowered me to nourish my family while cultivating a new source of income

- A Rohingya Woman



Resettlement Support Center



IRC operates the United States Government funded Resettlement Support Center (RSC) Asia sub-office in Cox's Bazar, which processes refugee applications referred by the United Nations High Commissioner for Refugees (UNHCR) to the United States Refugee Admissions Program (USRAP) for resettlement consideration. As of January 9, 2025, the RSC Asia Cox's Bazar sub-office is staffed by 68 national and seven international personnel. To support the needs of the expanding team, a field office in Ukhiya was established on November 3, 2024. This facility is dedicated to administrative activities associated with preparing applications for adjudication by U.S. government officials at the Madhurchara Processing Center. Additionally, for applicants approved for resettlement in the United States, RSC Asia conducts cultural orientation classes and collaborates with USRAP-Bangladesh partner, the International Organization for Migration (IOM), responsible for arranging travel to the United States.



Partnership

IRC's mission is to create impactful, scalable, and sustainable responses to crises through strong partnerships with local and national organizations. The Partnerships Excellence for Equality and Results System (PEERS) promotes collaborative relationships, placing affected communities at the heart of each intervention. By empowering local leadership and applying feminist principles, IRC shares power, resources, and knowledge to drive transformative change.

Partnering for Progress

IRC's partnership approach includes strengthening local systems through technical support, training, and resources. Capacity-building initiatives cover financial management, safeguarding, and compliance to ensure to ensure sustainable organizational development for its local partners.



"Our partnership with IRC has played a key role in supporting vulnerable coastal communities in Bangladesh, especially marginalized groups. Their efforts have improved protection, access to education, and disaster response."

– Hosne Ara Hasi
Chief Executive of JAGO NARI



In Cox's Bazar and Southern Bangladesh, IRC works with 16 local organizations, including 8 women-led groups, and three international NGOs to build long-term resilience.

IRC Bangladesh's strategic partnerships, including with CDD and BTS, align with shared values, expanding the impact and scale of their response. Under its Strategic Action Plan, IRC plans to partner with seven entities, including women- and youth-led organizations, academia, government bodies, and the private sector.

Our Partners





Advocacy and Communication

Shaping Voices, Shaping Change

In 2024, the International Rescue Committee (IRC) enhanced its advocacy and communication efforts to secure greater political and financial commitments for the Rohingya crisis in Bangladesh. Our mission focused on amplifying the voices of vulnerable communities, influencing policies, and improving access to life-saving services. By collaborating with governments, donors, partners, and humanitarian agencies, IRC worked across various platforms to promote equitable and sustainable solutions.

Key Areas of Focus

IRC's advocacy strategy centered around three main areas:

- **Ensuring Service Access:** Advocating for equitable access to essential services for affected communities
- **Amplifying Community Voices:** Elevating the perspectives of Rohingya refugees, host communities, and climate-impacted populations in policy discussions.
- **Strengthening Systems:** Supporting the development of resilient systems to ensure sustainable access to services.

Communication Champions Initiative:

IRC's Communication Champions Program empowered colleagues to engage directly with communities, sharing their stories through various content formats. This initiative not only increased IRC's visibility but also promoted a deeper understanding of the crisis. The program's success led to its adoption in other IRC country programs, including Uganda and Myanmar and Afghanistan, highlighting its effectiveness in combining advocacy and communication to influence policy.



“After participating in the Comms Champions training, I learned how I can take good photos with my mobile camera, it doesn't have to be high end camera, we take good photos if we know the techniques.”



- A training participant





“Visualizing the plight of Rohingya refugees inspires action toward a world of dignity and compassion. The United States remains committed to providing life-saving support to refugees and host communities.”

*- Reed J. Aeschilman
Mission Director, USAID
Special Guest, IRC Photo Exhibition*



Collaborative Advocacy for Impact:

In 2024, IRC's advocacy efforts spanned key platforms like the Refugee Coordination Team (ROCT), Strategic Executive Group (SEG), Advocacy Working Group, Child Labor Elimination Platform, Child Rights Advocacy Coalition, Asia Displacement Solutions Platform (ADSP), and Climate Justice Alliance-Bangladesh, addressing the impacts of crisis and climate change. Advocacy was amplified through briefs, stories, videos, and exhibitions, engaging donors, policymakers, and media. IRC also prioritized capacity building by providing advocacy training to staff and partners, enabling them to create impactful content. Additionally, IRC strengthened local and national NGOs, including the NGO platform, by offering technical expertise and training on humanitarian advocacy, policy influence, and message development to 40 participants.

Key Advocacy progress

Food Security Advocacy:

IRC successfully advocated for an increase in food rations for Rohingya refugees, raising the amount from \$8 to \$10 per person through tailored Advocacy and collaboration with humanitarian agencies.

High-Level Advocacy for Durable Solutions:

At the High-Level Meeting on Rohingya Refugees conference and Humanitarian Partnership Week in Bangkok, IRC led discussions on shared responsibility and sustainable solutions. IRC's Country Director represented the NGO/INGO community at the 2024 Joint Response Plan launch in Geneva, emphasizing the urgent need for global support.

Global Advocacy at the Refugee Forum:

IRC supported eight multi-stakeholder pledges at the Global Refugee Forum, focusing on economic inclusion, mental health, gender equality, resettlement, and climate resilience, showcasing the challenges faced by Rohingya refugees.

Shaping Policy and Raising Awareness:

IRC's Through the Lens of Hope photography exhibition in Dhaka highlighted the Rohingya crisis, drawing media attention and public engagement. During the event, the Pixel to Policy panel brought together donors, policymakers, academics, and media, leading to a policy brief shared with stakeholders. Op-eds in national and regional news-papers further amplified the crisis, while advocacy dialogues convened key actors to push for access to services and sustainable solutions.

Advocacy for Continuity:

IRC successfully advocated with the Bureau of NGO Affairs in Bangladesh to extend the Foreign Donation 7 approval period from six months to one year, ensuring the uninterrupted delivery of life-saving operations.





Strengthening Safe Practices

The IRC is committed to ensuring that its personnel and associates do not engage in any conduct that harms clients, volunteers, staff, or partners. This includes all forms of abuse, exploitation, and harassment, as well as any misuse of power. By conducting comprehensive security risk assessments and adopting a collaborative leadership approach, the organization empowers its staff while addressing systemic inequities. Tools such as the Rapid Needs Assessment are utilized to ensure that disaster responses effectively meet the needs of women and marginalized groups. The safeguarding policies in place promote safe programming, preventing harm, and building trust within communities. Initiatives like "Cholo Shobai!" (Let's Go Together!) utilizes a peer-led, participatory approach to promote equality and respect, thereby transforming workplace dynamics. By embedding safeguarding principles at the core of its operations, the IRC strengthens resilience, dignity, and inclusivity through-out Cox's Bazar and southern Bangladesh.



"This training made me realize how power operates in subtle ways. I now see how my experiences are shaped by gendered power structures and how those experiences differ for others."

- A training participant



Ethics and Compliance

Commitment to Compliance

The IRC's Ethics and Compliance Unit (ECU) fosters a culture of integrity by ensuring a safe, secure, and ethical work environment. With strong internal controls and accountability measures, IRC has established confidential reporting channels for staff, volunteers, partners, clients, and suppliers to address concerns and safeguard sensitive information. The ECU enhances awareness through fraud prevention training and the integration of safeguarding principles into daily operations. IRC also ensures compliance with donor requirements and adheres to local laws and regulations, maintaining transparency and accountability across all programs and policies.





People-Centered Culture Shift

The Human Resources department has undergone a paradigm shift, evolving from a traditional HR model to a more dynamic and inclusive focus on People and Culture. We are promoting an people-centric environment of belonging, empowerment, and growth while delivering all HR functions. It has been driven by strategic partnerships, the adoption of global best practices, and a strong commitment to innovation in people management.

We take pride in IRC's diverse workforce of 545 staff members, with nearly equal gender balance and a commitment to disability inclusion. These efforts reflect a steadfast belief in creating opportunities for everyone and building a culture where every individual can thrive, irrespective of their background.

Through initiatives that prioritize duty of care and mental health, we support our staff during times of crisis. This approach has led to a low attrition rate of 2.59%, reflecting the success of our inclusive culture and dedication to an equitable, people-centered workplace.

Resilient Operations, Lasting Impact

In 2024, operational excellence remained a cornerstone of IRC's success in Bangladesh, driving efficiency across IT, fleet, safety & security, and canteen management, while strengthening relationships with local authorities and national government institutions. Advanced IT systems streamlined workflows, improving productivity across the organization. An optimized fleet ensured timely support for field operations while robust safety and security protocols safeguarded staff and assets, promoting resilience in challenging environments. Enhanced canteen management improved employee well-being, reflecting IRC's commitment to holistic support. Strengthened relationships with government institutions facilitated seamless program implementation, enabling impactful service delivery. Together, these efforts ensured a thriving country program, reinforcing IRC's ability to address complex needs in Rohingya and host communities effectively and sustainable solutions to vulnerable communities across the country.



"I never felt left out here. My passion for driving brought me to IRC, and I'm proud to serve people in need every day."

- Selina Akter (Driver)



GRANTS

We Thank Our Donors

We extend our heartfelt appreciation to our donors for their invaluable support, enabling the International Rescue Committee along with its local and national partners to address the Rohingya crisis and the challenges posed by climate change in Cox's Bazar, Khulna, Barisal, Patuakhali, and Satkhira. Your contributions have been instrumental in reaching the most vulnerable communities, including women, girls, children, and persons with disabilities, ensuring access to essential services and promoting resilience. As we look ahead to 2025 and beyond, we remain optimistic about continuing this collaboration to build sustainable solutions together. Your firm support is the foundation of our mission, and we thank you sincerely for your trust and generosity.

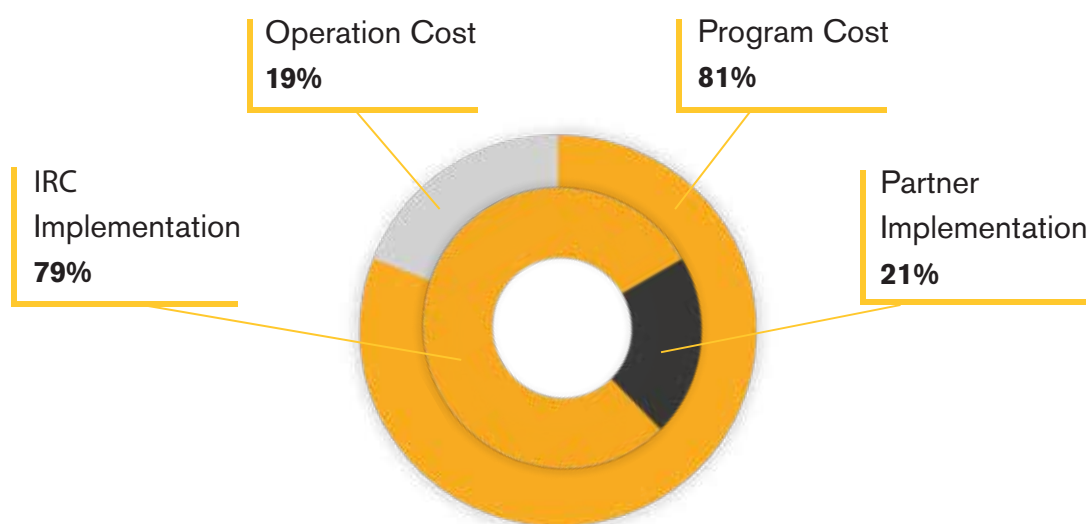
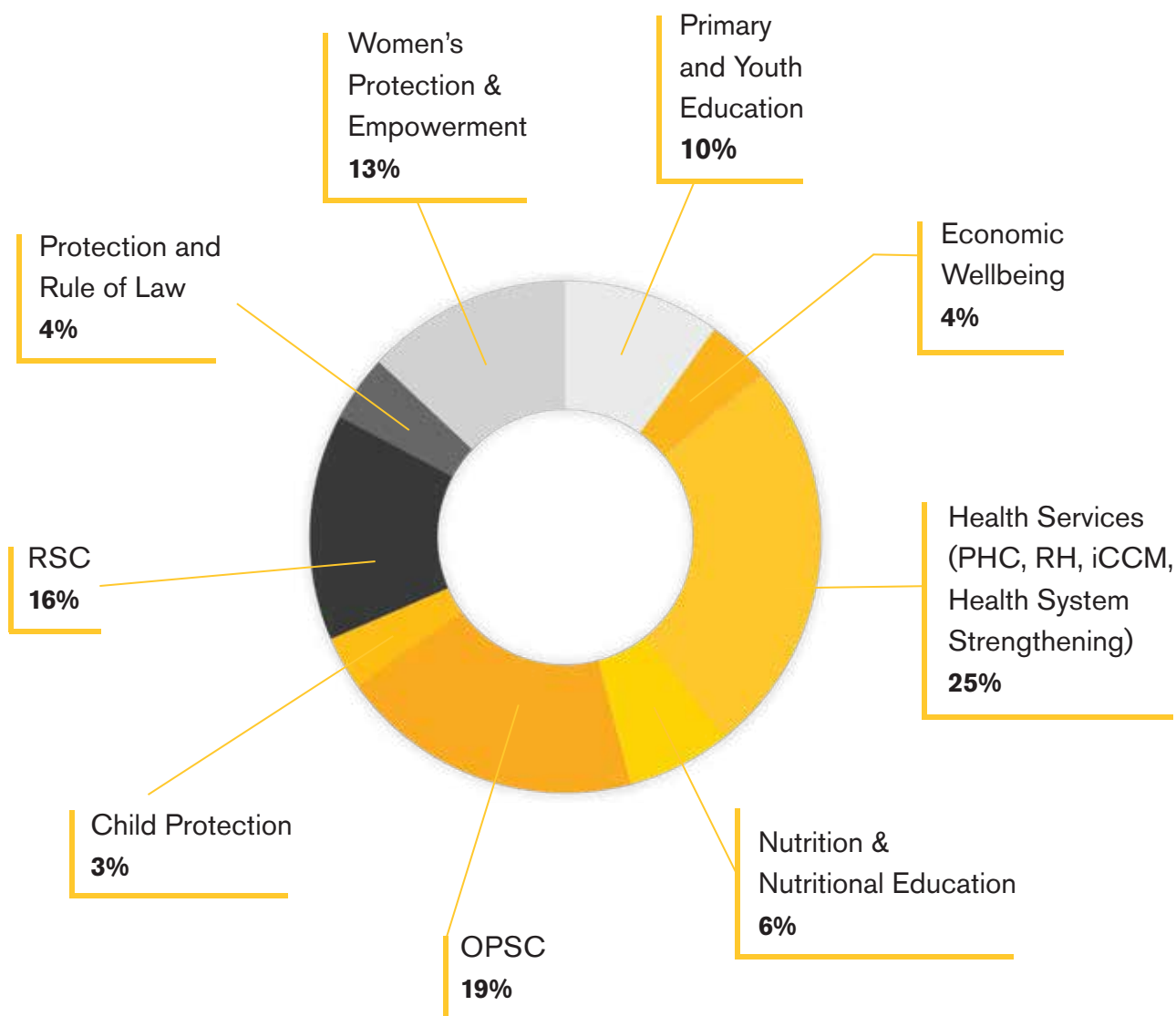


**Arnhold
Family
Foundation**

Teach For All



Financial Statistics





Dhaka Office

Apt: A4, Samad Abode
House: CEN D(3), Gulshan - 2
Dhaka-1212, Bangladesh
Tel: +880-2-8881453
Email: IRC.BD@rescue.org

Cox's Bazar Office

2nd & 3rd Floor
Sayeman Heritage Residence,
Baharchara, Cox's Bazar-4700,
Bangladesh
Tel: +880-2-8881453

Ukhiya Office

House 1288,
Rajapalong Sheikh Para,
Kashiar Bill, Ukhiya
Cox's Bazar - 4750
Bangladesh