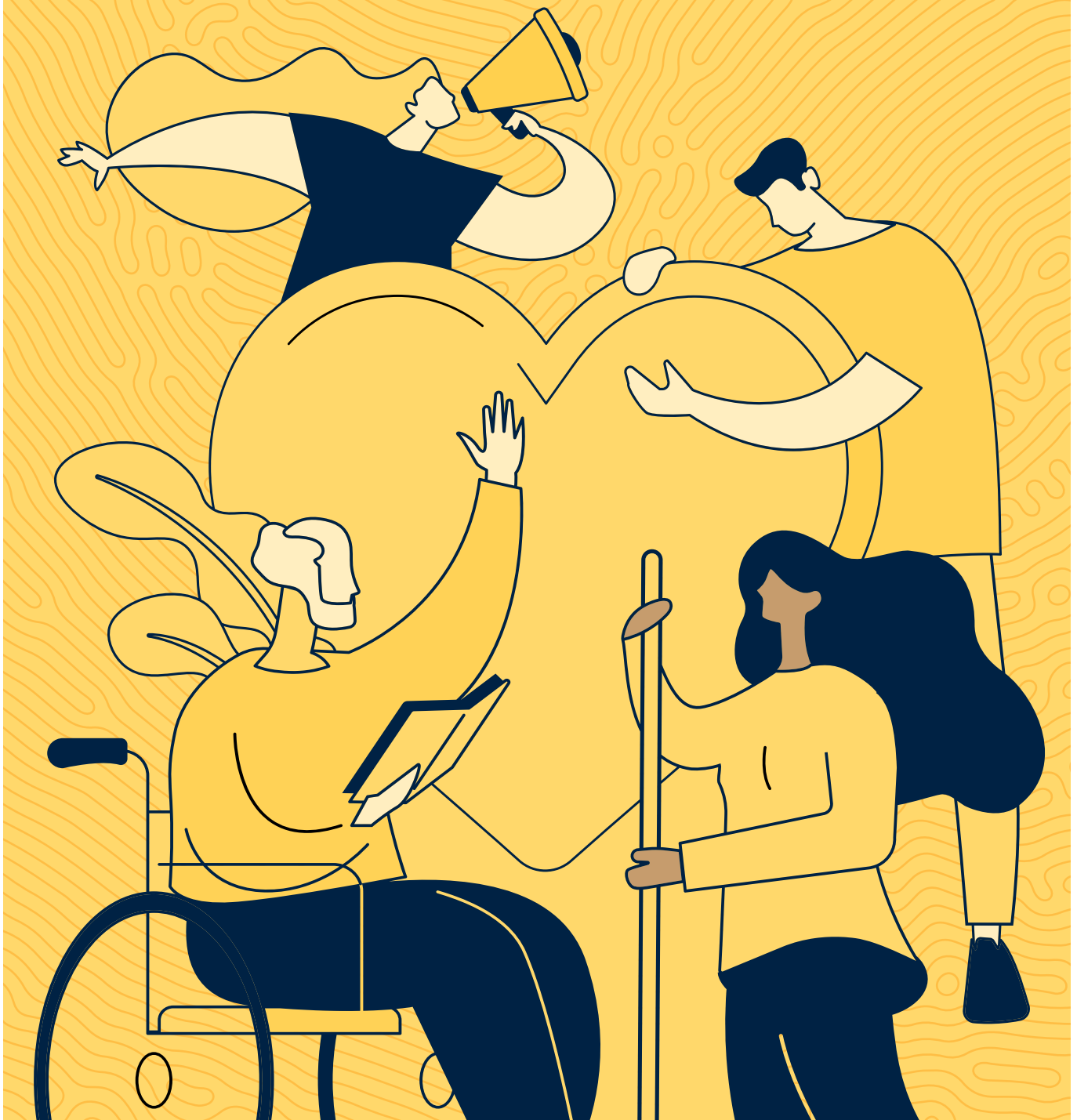


Support for Social Recovery Needs of Vulnerable Groups Phase II (SRP2)

PROJECT BRIEF



PROJECT BRIEF

OUR STORY

Across Lebanon, countless individuals face intersecting vulnerabilities that threaten their safety, dignity, and well-being.

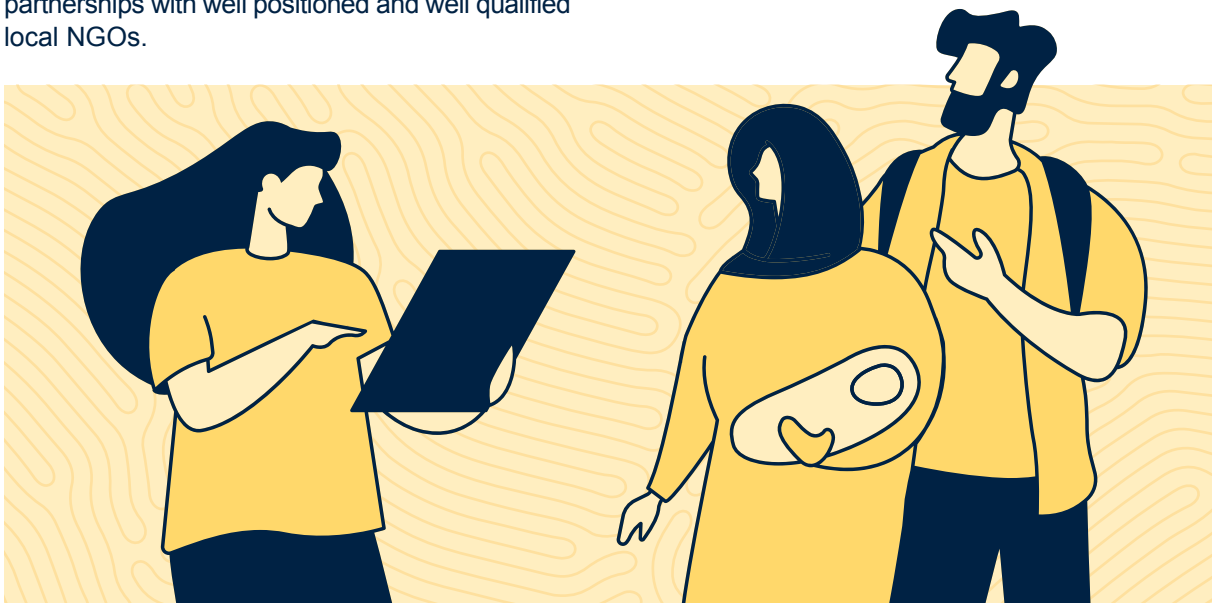
Survivors of gender-based violence (GBV), struggle with deep psychological scars and isolation. Working professionals contend with overwhelming stress and a lack of accessible mental health resources. Young mothers are left without opportunities to regain economic independence. Older people face barriers to basic health services and social connection. Persons with disabilities encounter daily obstacles to full participation in community life. And teenagers under judicial protection remain at risk of neglect and exploitation. These challenging situations reflect the deep and intersecting needs of Lebanon's most vulnerable.

The Support for Social Recovery Needs of Vulnerable Groups Phase II (SRP2) project aims to ease some of these struggles by providing access to quality care and recovery services. This project responds to systemic gaps in social, health, and protection services by leveraging partnerships with well positioned and well qualified local NGOs.

Building on the foundations established under Phase I, the Support for Social Recovery Needs of Vulnerable Groups – Phase II (SRP 2) project addresses remaining gaps and emerging needs arising from Lebanon's multiple crises.

Through interventions in mental health, protection, livelihoods, social inclusion, and empowerment, SRP2 strengthens social recovery by providing life-changing support to those most affected, including survivors of gender-based violence, individuals experiencing deteriorating psychosocial well-being, persons with disabilities, older persons, as well as forcibly displaced persons, host communities, and migrant workers.

Phase I of the project (April 2022–April 2024) laid the groundwork for a coordinated response to the Beirut Port explosion by strengthening access to protection, psychosocial, and health services for vulnerable populations. Through 15 projects implemented in partnership with 11 NGOs, Phase I reached over 10,000 individuals across key sectors.



THEMATIC AREAS

Gender-Based Violence (GBV)

KEY FOCUS

Empower survivors through case management, psychosocial and legal support, medical care, with livelihoods support in safe spaces and develop sensitization and awareness programs.



Child Protection

KEY FOCUS

Support shelters for boys under judicial protection, offering trauma-informed care, education, and family reintegration support.

Mental Health and Psychosocial Support (MHPSS)

KEY FOCUS

Strengthen suicide prevention lifelines and deliver evidence-based interventions (Step-by-Step, Self-Help Plus and promote mental health in workplaces for managers and business owners).



Healthcare Services & Targeted Rehabilitation for Elderly & PWD

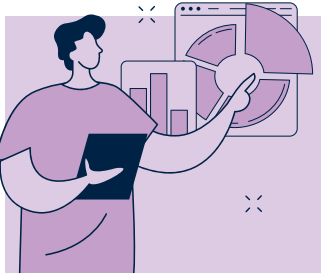
KEY FOCUS

Deploy mobile medical units and strengthen community-based rehabilitation services for older persons and people with disabilities (PWD), including access to specialized healthcare, alongside livelihoods support for persons with disabilities.

NGO Capacity Strengthening

KEY FOCUS

Build partners' capacities in project management, fiduciary compliance, and localization strategies.



COMMUNITIES WE SERVE

 <p>Survivors of Gender Based Violence (GBV) (women and children)</p>	 <p>Children under judicial protection</p>	 <p>Individuals with mental health challenges</p>	 <p>Persons with disabilities</p>	 <p>Older persons</p>	 <p>Migrant workers</p>
---	--	---	---	---	---

PROJECT SCALE AND PARTNERS

IMPLEMENTING AGENCY

International Rescue Committee (IRC)



ADMINISTERED BY



SUPPORTED BY



Kingdom of the Netherlands

FUNDING

USD 5.6 million

SUPPORTED PROJECTS

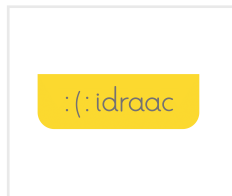
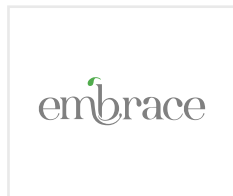
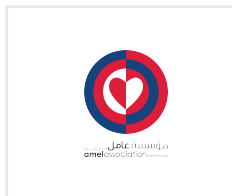
13 projects with 5 thematic areas

PROJECT DURATION

Sep 2024 – June 2026 (21 months)



LOCAL PARTNERS (NGOs)



GOVERNMENT PARTNER

National Mental Health Programme – Ministry of Public Health (MoPH)

To strengthen national systems and align them with the Ministry of Public Health's mental health standards.



Lebanese Republic
Ministry of Public Health
National Mental Health Programme

OUR TARGETED CHANGE AND RESULTS TO DATE

JAN 2026

Gender-Based Violence (GBV) beneficiaries receiving social and health services

Women, accompanied girls, and at-risk boys.

 **3,500**

 **PROGRESS**

36 children protected through sheltering services

1,958 beneficiaries accessed the awareness sessions

1,745 survivors were reached through the safe space and provided with case management, psychosocial support (PSS), focused PSS, legal services, and/or cash assistance

151 GBV survivors accessed support through the safe shelter

Enhanced livelihood opportunities for women survivors, those at risk of GBV, and persons with disabilities (PwDs)

 **80 PWD AND 240 WOMEN**

 **PROGRESS**

244 women have been reached

55 PwD have been reached

Older persons and people with disabilities beneficiaries receiving physical and psychosocial services (disaggregated by gender)

 **3,500**

 **PROGRESS**

929 people with disability

1,925 PwD older persons received medical health service

Strengthened suicide prevention and Mental Health and Psychosocial Support networks

 **8,400**

 **PROGRESS**

5,340 individuals served through Lifeline support service

1,451 people served through the Step-by-Step

900 people through the Self-Help-Plus service

39 businesses participated in the Mental Health in the Workplace initiative

Increased local NGO capacities and sustainability

 **350**

 **PROGRESS**

515 care workers / NGO Staff in multiple NGOs capacitated

This work is implemented by different partners in coordination with the International Rescue Committee (IRC) and is made possible by the World Bank administered Multi Donor Trust Fund for Forced Displacement and the PROSPECTS Partnership. PROSPECTS brings together the World Bank, IFC, ILO, UNHCR, and UNICEF to address the challenges of forced displacement and is supported by the Kingdom of the Netherlands.



Kingdom of the Netherlands