

# International Rescue Committee Thailand: Strategy Action Plan



P Biro / IRC

*Issued June 2019*





## IRC2020 GLOBAL STRATEGY OVERVIEW

The International Rescue Committee's (IRC) mission is to help the world's most vulnerable people survive, recover, and gain control of their future. The aim of our global strategy, IRC2020 (see right), is to make measurable improvements in health, safety, education, economic wellbeing, and decision-making power. Therefore, the IRC has made investments to design more effective programs, use resources more efficiently, reach more people more quickly and better respond to beneficiaries' needs.



## THAILAND OVERVIEW

Thailand has made significant social and economic strides to rise from a low income country to its current middle income status within a generation. The country is on track to meet most of the Sustainable Development Goals and can boast achievements such as greatly reduced maternal mortality and infant mortality rates, and a national 97 percent access to clean water and sanitation.

Within its borders yet there remain populations that have not had access to this impressive progress. Most notably are various peoples living in crisis, including the approximate 99,800 refugees from Myanmar in nine temporary shelters along the Thai border with Myanmar, a large percentage of the “migrant workers” many of whom are conflict-affected people from Myanmar, and urban based refugees and asylum seekers mostly in Bangkok and the surrounding urban area.

Conflict-affected people from Myanmar living in Thailand will continue to have limited pathways to legal status, and therefore face barriers to services and threats of abuse and exploitation.

The IRC will address these challenges through its extensive experiences in both camps and urban areas, expertise in health, livelihoods, protection, women's empowerment and partnerships with various local and international stakeholders.

## IRC'S STRATEGIC PROGRAMMING

The IRC's strategy for Thailand illustrates its commitment to improving the safety, health, livelihoods and decision-making power of crisis-

particular with the private sector, to strengthen *Signature Programming* focusing on outcomes in Safety, Health, Economic Well-being and Power. From now until the end of 2020, the IRC's strategy

Figure 1: Priority Outcomes and Current Programs

	Priority Outcomes in Thailand	Current Programs
<b>SAFETY</b>	<ul style="list-style-type: none"> <li>&gt; People are safe in their homes and receive support when they experience harm</li> <li>&gt; People are safe in their communities and receive support when they experience harm</li> <li>&gt; Women and girls are equally safe from harm as men and boys where they live, learn, and work</li> </ul>	<ul style="list-style-type: none"> <li>&gt; Provide comprehensive prevention and response services to address violence against displaced women and girls and expand capacity building of safe houses, raising awareness through outreach activities, information sharing, and legal assistance.</li> <li>&gt; Prevent and respond to gender based violence, community level mediation and dispute mechanisms, and access to justice.</li> </ul>
<b>HEALTH</b>	<ul style="list-style-type: none"> <li>&gt; People are protected from and treated for non-communicable disease</li> <li>&gt; Women and adolescent girls are protected from and treated for the consequences of gender-based violence</li> </ul>	<ul style="list-style-type: none"> <li>&gt; Ensure basic health needs are met in the refugee camps through provision of primary health care and environmental health services, including quality water and sanitation facilities.</li> <li>&gt; Treat non-communicable diseases and chronic malnutrition.</li> <li>&gt; Provide safe spaces for women and girls to learn about health and how to prevent early marriage and sexual violence</li> </ul>
<b>ECONOMIC WELL-BEING</b>	<ul style="list-style-type: none"> <li>&gt; People meet basic needs and avoid negative coping strategies</li> <li>&gt; People generate income and assets</li> <li>&gt; Women use and control resources and assets</li> </ul>	<ul style="list-style-type: none"> <li>&gt; Upskilling – provide training based on market demands in Thailand, neighboring Myanmar, and the wider region.</li> <li>&gt; Enterprise development - promote self-reliance, strengthen / expand micro-enterprise development and village savings and loans associations</li> </ul>
<b>POWER</b>	<ul style="list-style-type: none"> <li>&gt; People have the power to choose how to live</li> <li>&gt; Women and girls are equally able as men and boys to choose where to live, how to live and how they are governed</li> </ul>	<ul style="list-style-type: none"> <li>&gt; Develop innovative communication and data collection tools necessary to support displaced people's access to the knowledge and skills necessary to exercise choice over how to live.</li> <li>&gt; Support community-based women's organizations to empower women leaders, ensuring women have a voice in key decisions that affect their communities.</li> </ul>

affected people in Thailand and in southeast Myanmar. The IRC has deep roots in Thailand, with an established presence since 1975. Today, the IRC operates in Tak, Mae Hong Son, Ratchaburi, and Kanchanaburi provinces, as well as Bangkok.

The Thailand country office builds upon its longstanding experience, expertise and partnerships, sustained core donor interest, and the potential of new funding partnerships, in

in Thailand will ensure conflict-affected people from Myanmar remaining in Thailand are healthy and safe in their homes and in their communities, and receive support when they experience harm; support their ability to make key decisions and increase their options or the number or variety of choices at their disposals; and ensure women and girls are equally able as men and boys to choose how to live and influence decisions that affect their lives. (see Figure 1).



## COMMITMENTS FOR IMPACT

In order to maximize impact and achieve the priority outcomes, the IRC in Thailand is making investments to improve program effectiveness, use resources more efficiently, react more quickly when crisis strikes, be more responsive to beneficiaries and partners, and expand program reach. The IRC made the following commitments to strengthen programming and improve the lives of the people it serves in Thailand.

Figure 2: Commitments to Ensure Impact



### Effectiveness

- > Analyze the stakeholders, conflict and gender dynamics and mitigate program risks in order to do no harm.
- > Use Theories of Change to design and implement projects that achieve Signature and Core outcomes.



### Best Use of Resources

- > Ensure programs maximize the outputs and outcomes achieved per dollar spent based on existing evidence, and conduct cost analysis of our own projects at close-out.



### Responsiveness

- > Clients routinely provide feedback that informs key decisions during project design, start-up, implementation and close-out.



### Gender Equality

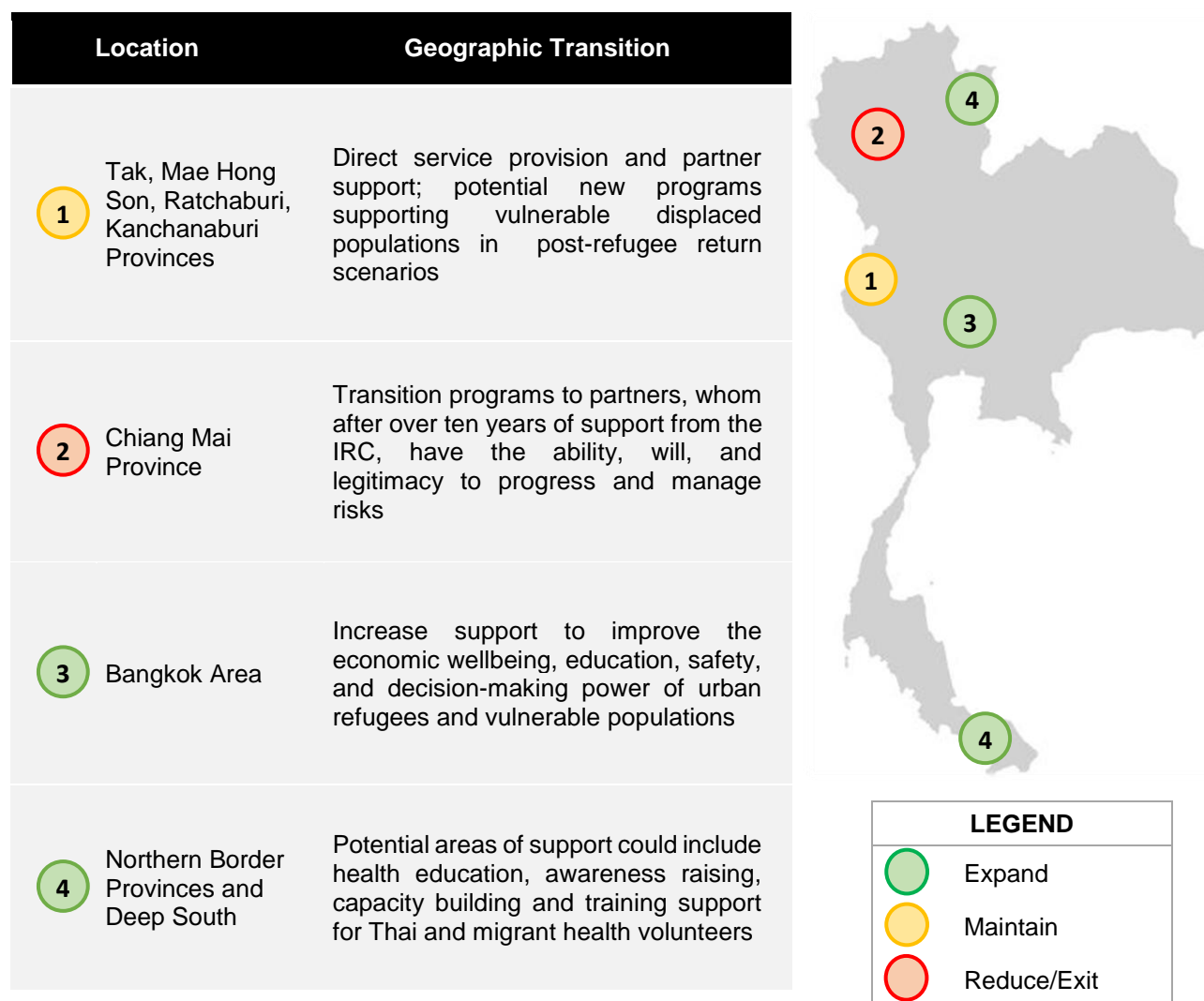
- > Design and implement programs that are sensitive to the specific needs and risks of women and girls.



## IRC'S STRATEGIC PRESENCE

From now until the end of 2020, the IRC will maintain, expand, and close sites across Thailand based on an analysis of where the greatest need is and where the IRC can create the biggest impact.

Figure 3: The IRC's Geographic Transitions in Thailand







P Biro / IRC

# The IRC in Thailand



Darren Hertz, Country Director  
[Darren.Hertz@rescue.org](mailto:Darren.Hertz@rescue.org)



[Rescue.org/where/Thailand](https://rescue.org/where/Thailand)



INTERNATIONAL  
**RESCUE**  
COMMITTEE